

# COASTAL SEDIMENT MANAGEMENT WORKGROUP

Heather Schlosser  
US Army Corps of Engineers  
South Pacific Division

Casey Caldwell  
CA Dept of Parks and Recreation  
Division of Boating and Waterways





**OVERVIEW**



**SOLUTIONS**



**PRODUCTS**



**REGIONAL SEDIMENT  
MANAGEMENT PLANS**

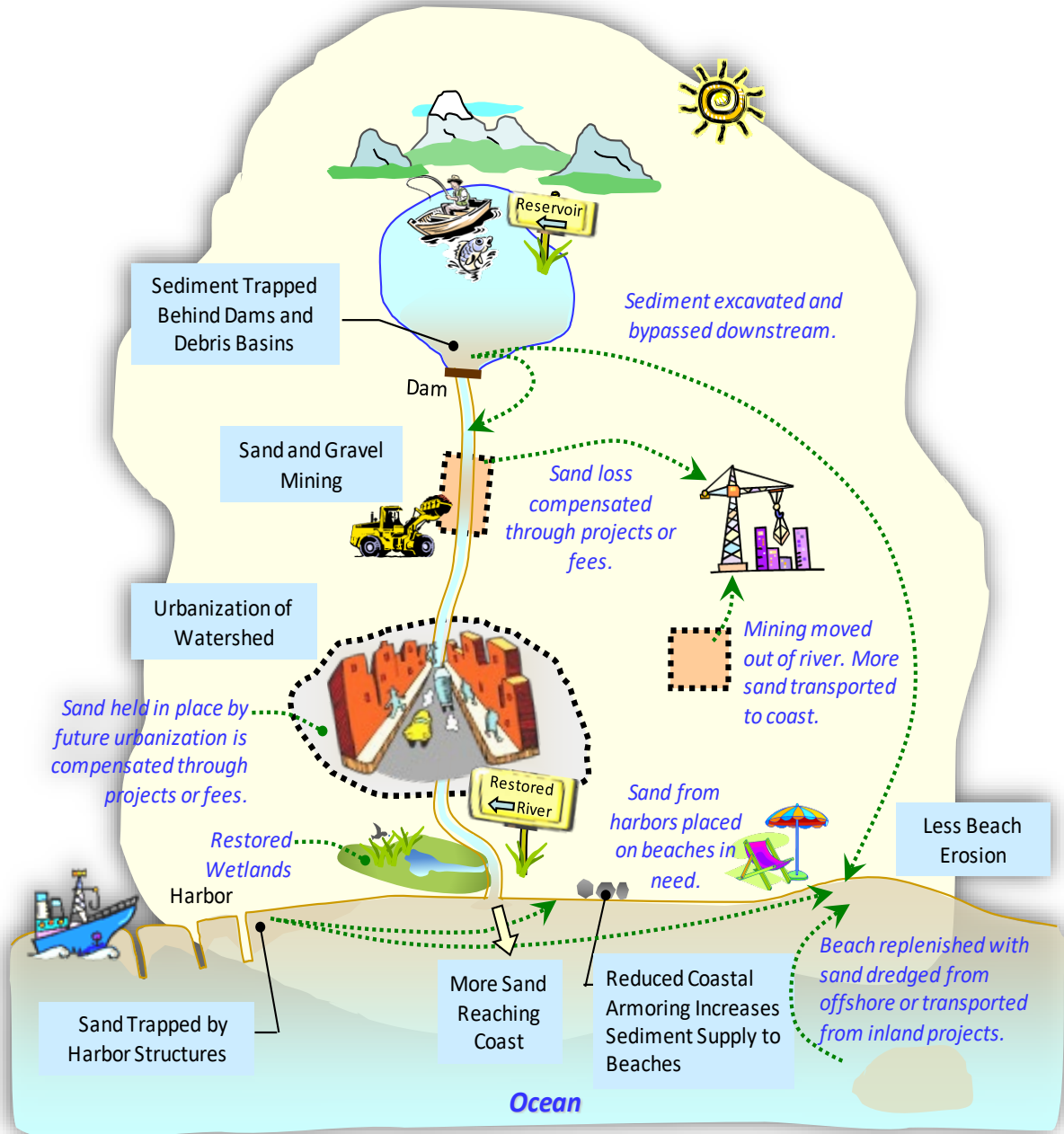
## MISSION



*California's coastal resources  
by  
developing and facilitating  
regional approaches  
to  
managing sediment imbalances*

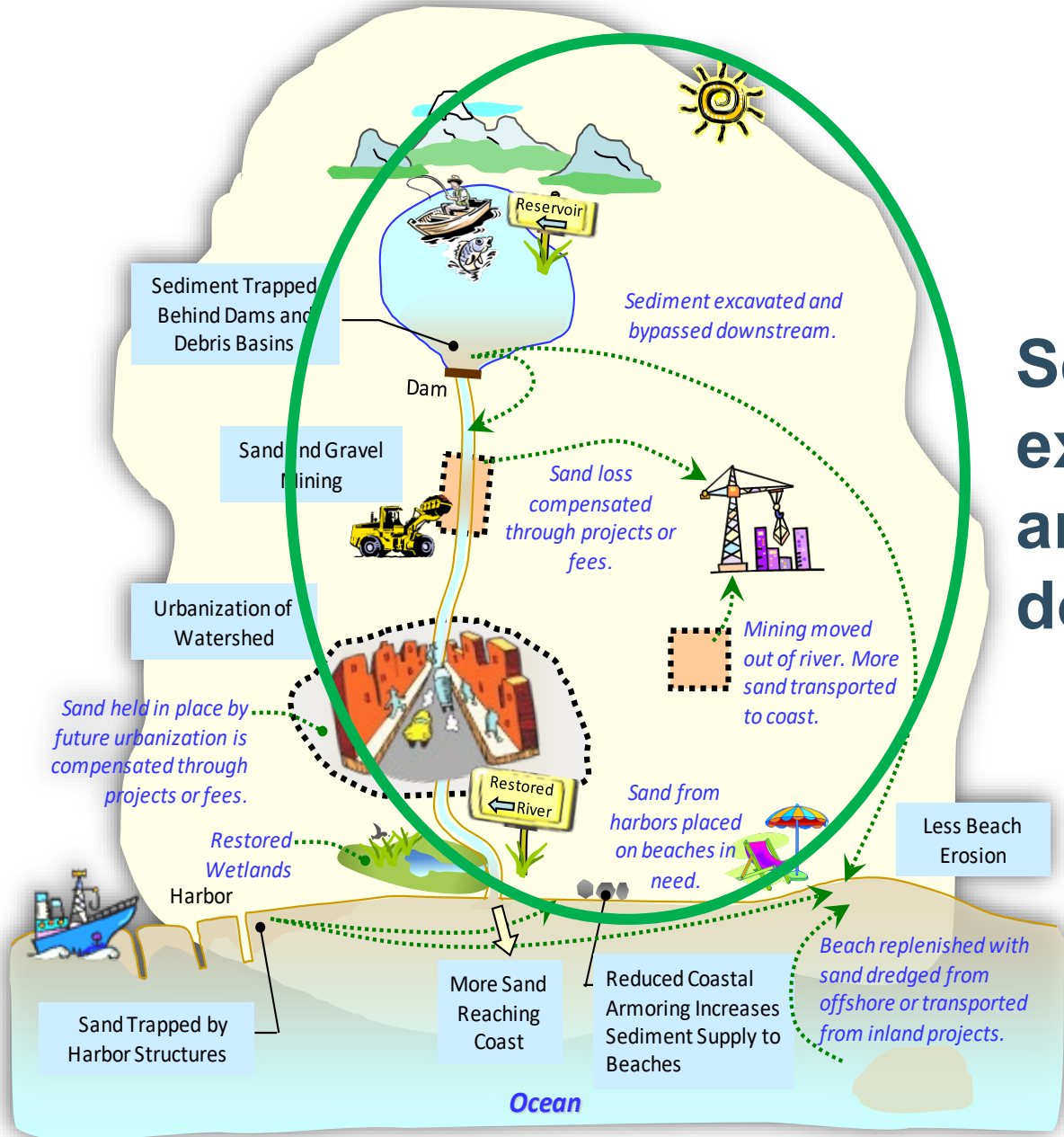
# SEDIMENT MANAGEMENT SOLUTIONS

S  
O  
L  
U  
T  
I  
O  
N  
S



Source: CSMW Brochure

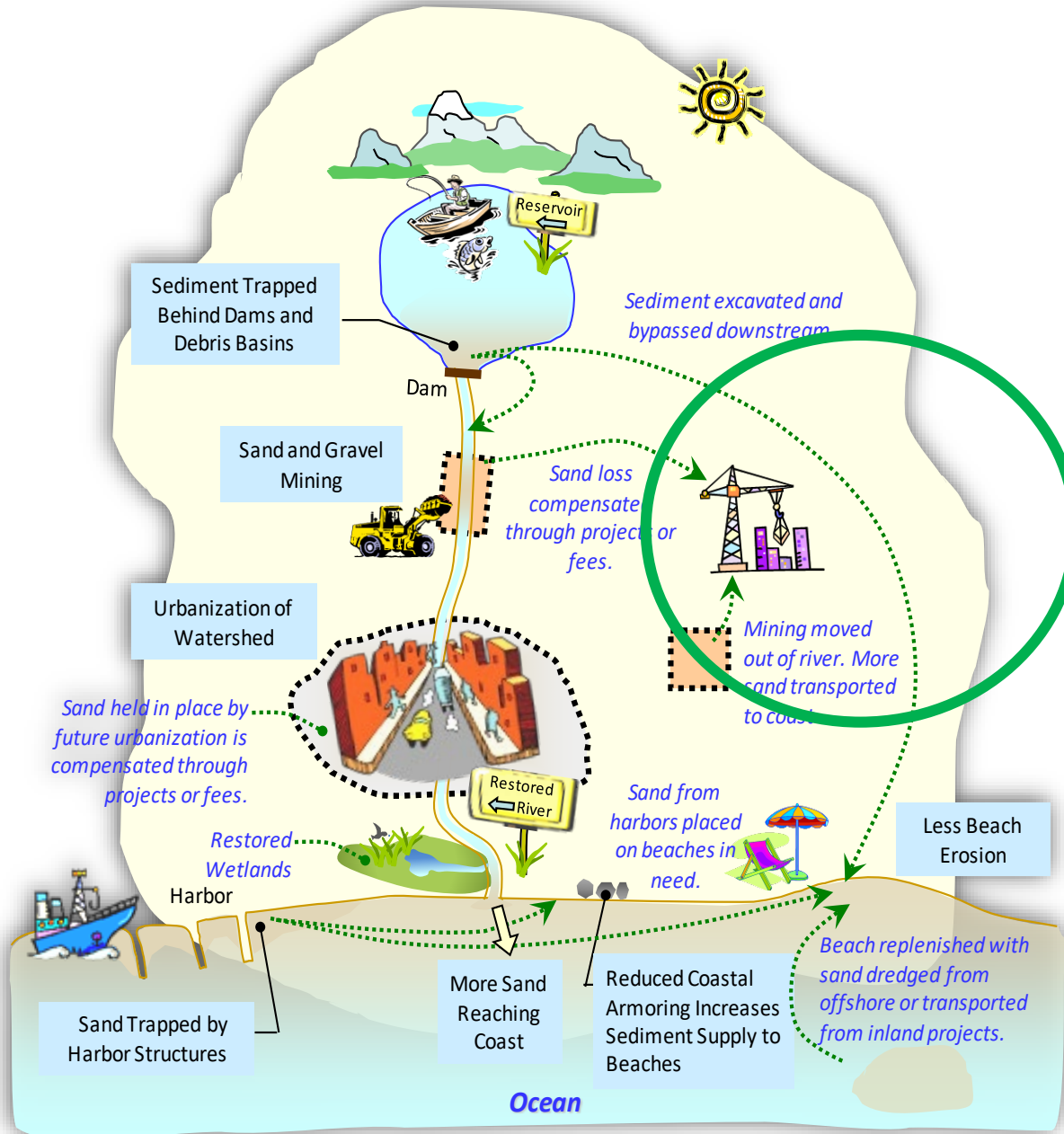
S  
O  
L  
U  
T  
I  
O  
N  
S



## Sediment excavated and bypassed downstream

Source: CSMW Brochure

S  
O  
L  
U  
T  
I  
O  
N  
S

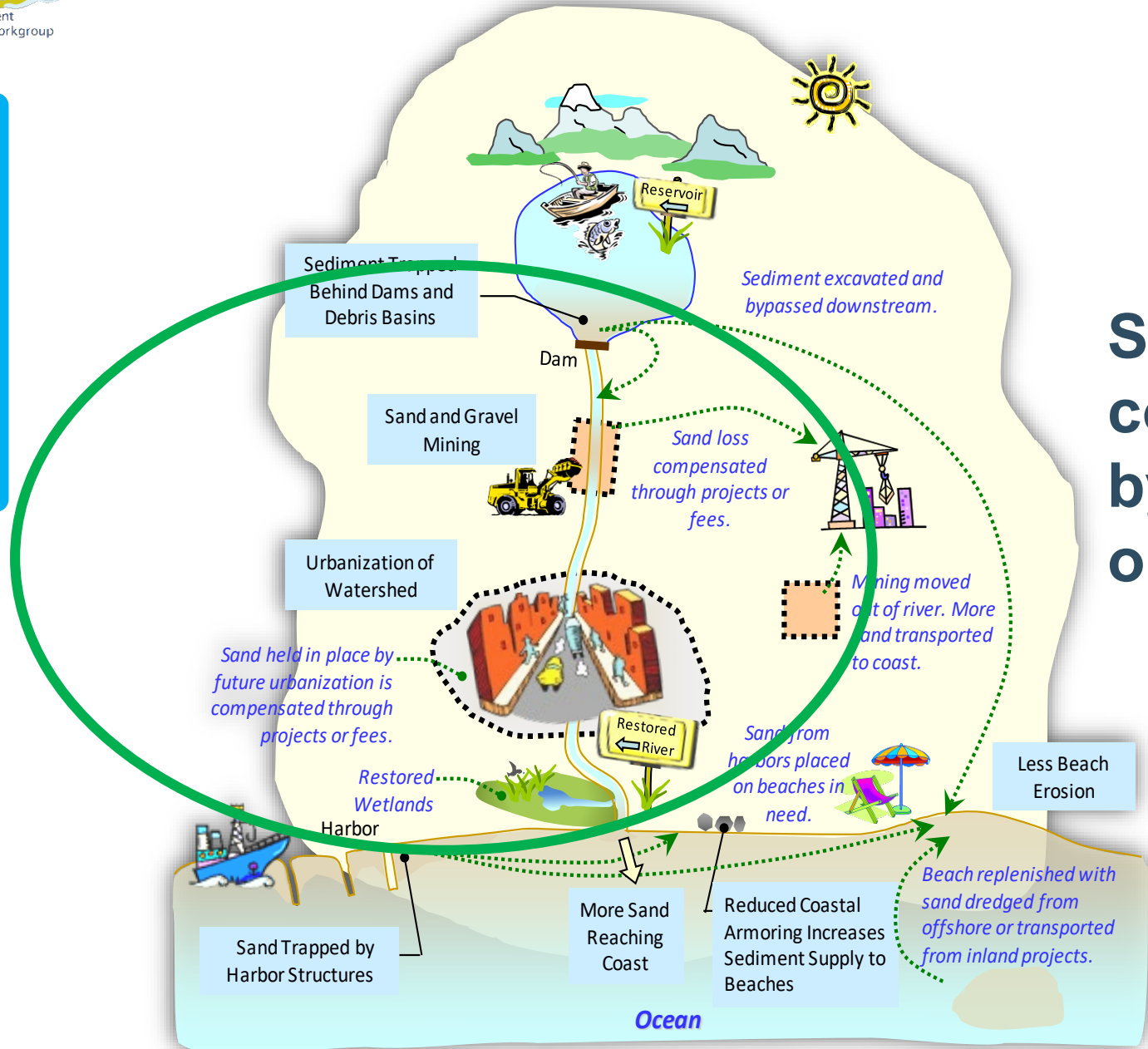


## Sand Mining moved out of the river (or beach)

Source: CSMW Brochure

# SEDIMENT MANAGEMENT SOLUTIONS

S  
O  
L  
U  
T  
I  
O  
N  
S

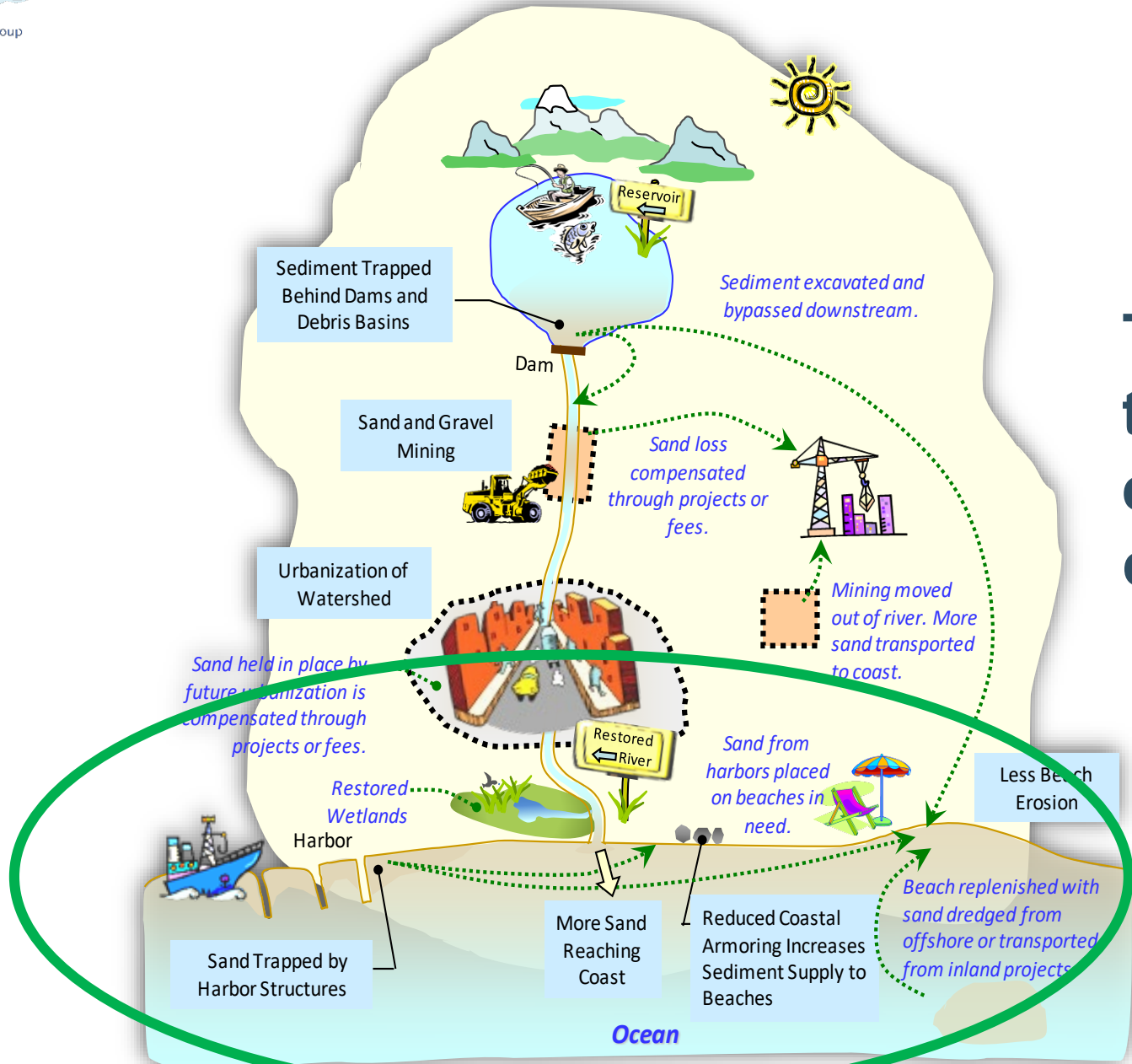


**Sand lost  
compensated  
by placement  
or fees**

Source: CSMW Brochure

# SEDIMENT MANAGEMENT SOLUTIONS

S  
O  
L  
U  
T  
I  
O  
N  
S

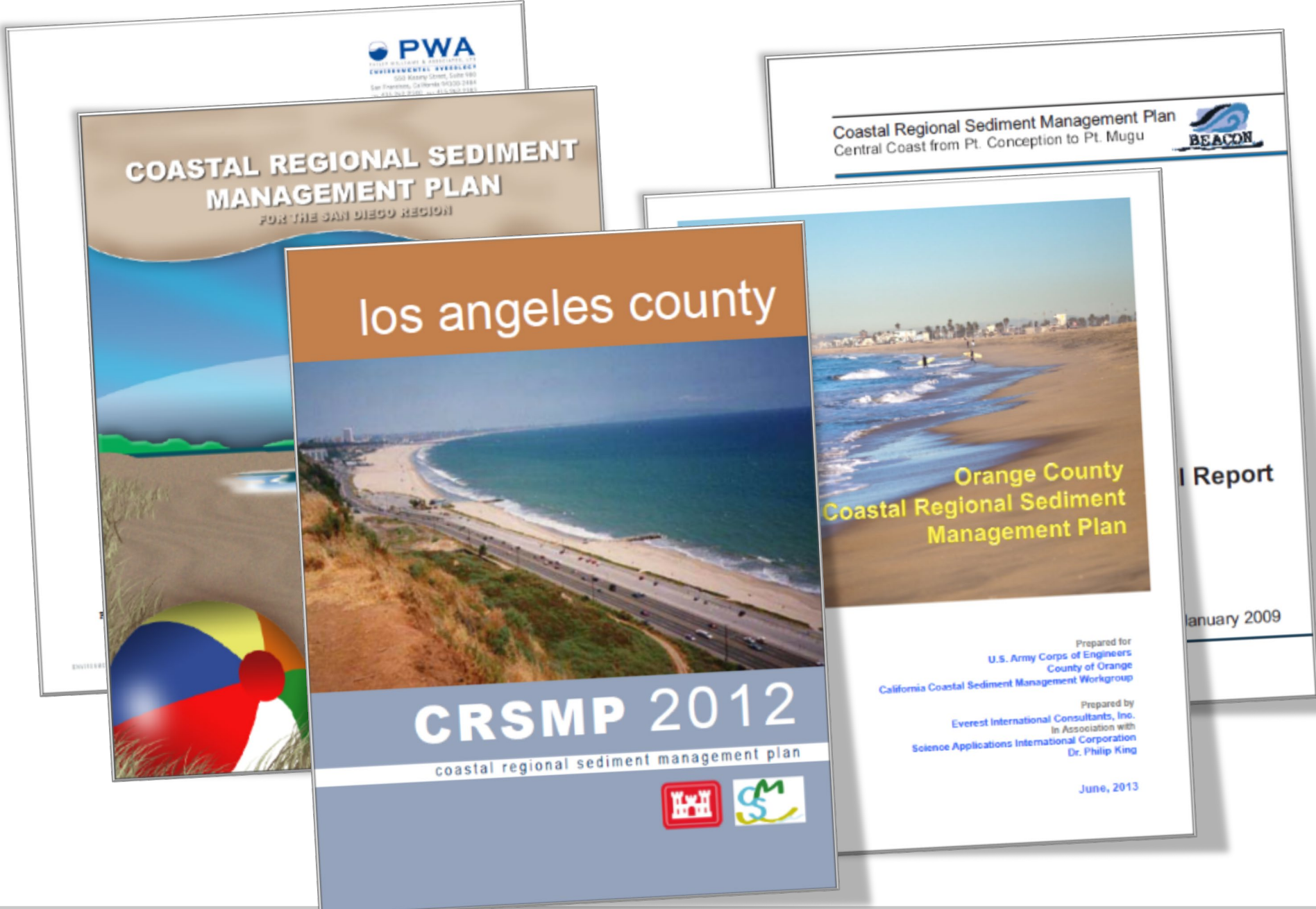


Trapped sand transported to erosion concern areas

Source: CSMW Brochure



**P  
R  
O  
D  
U  
C  
T  
S**



## *How do beaches form and change?*

# **BEACHES, LITTORAL DRIFT, AND LITTORAL CELLS- UNDERSTANDING CALIFORNIA'S SHORELINE**

KIKI PATSCH  
GARY GRIGGS

**P  
R  
O  
D  
U  
C  
T  
S**





# SCOUP

## Regional Sand Management Plan

- Protocols for compatibility comparisons, potential sources and receiver sites
- Assess regional approaches for reuse of upland sands
- Roadmap for regulatory consultations



Evaluate the major littoral sediment budgets along the CA coast for guidance on project-based studies

P  
R  
O  
D  
U  
C  
T  
S

## DEVELOPMENT OF SAND BUDGETS FOR CALIFORNIA'S MAJOR LITTORAL CELLS

KIKI PATSCH

GARY GRIGGS



JANUARY 2007

INSTITUTE OF MARINE SCIENCES

UNIVERSITY OF CALIFORNIA, SANTA CRUZ

CALIFORNIA COASTAL SEDIMENT MANAGEMENT WORKGROUP

# Study: Fate and Transport of Fine-Grained Sediment

Sources, Dispersal, and Fate of Fine Sediment Supplied to Coastal California



Evaluate physical impacts and fate of fine-grained materials within/deposited from turbidity plumes

Scientific Investigations Report 2007–5254  
**U.S. Geological Survey**

# RSM GOALS AND STRATEGIES




R  
S  
M

Reduce Upland/CDF Disposal



Bypass Backpass Sediments



Reduce Erosion



Save Capacity



- Keep sediments in the system
- Mimic natural sediment processes
- Reduce unwanted sedimentation
- Environmental enhancement
- Maintain & protect infrastructure

Stabilize Structures



Reduce Channel Shoaling

Reduce Runoff

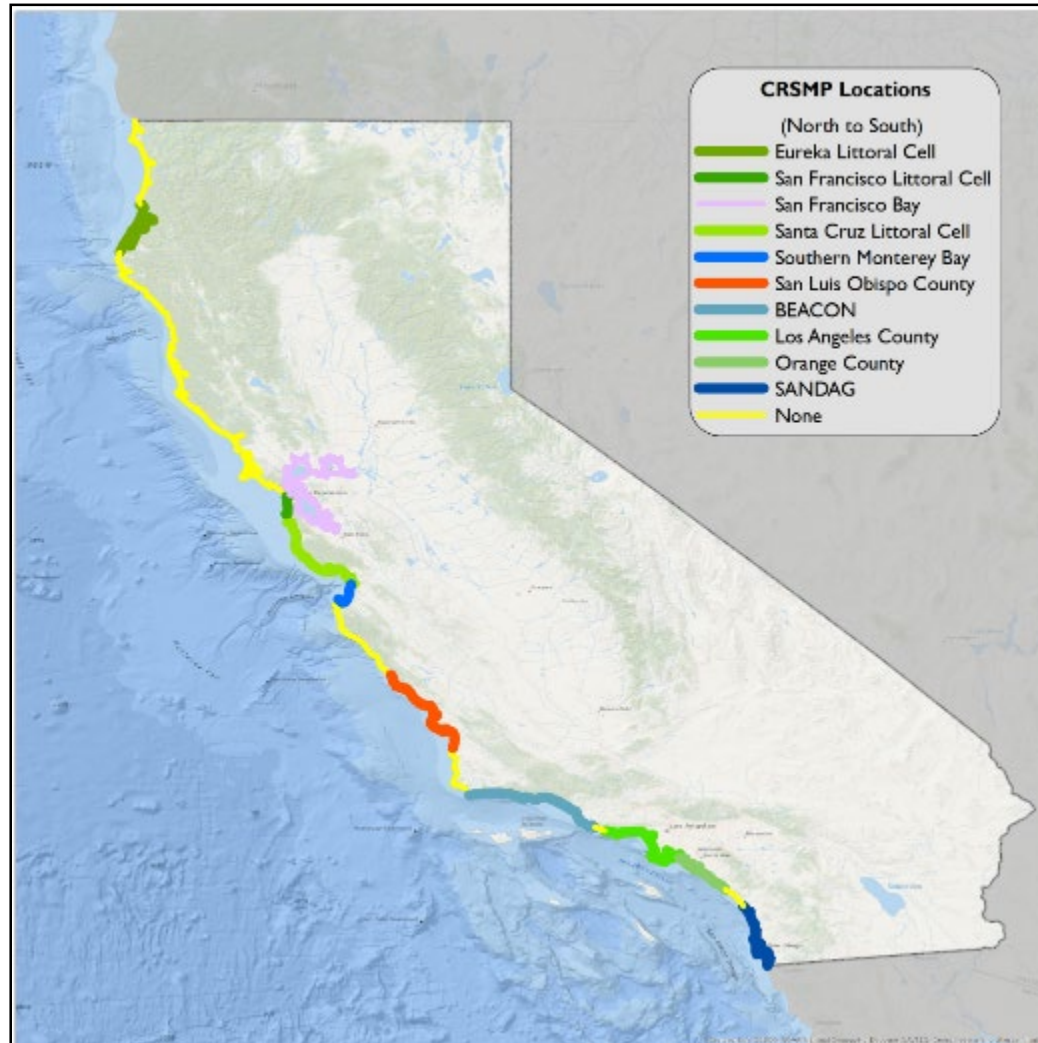


Ecosystem Habitat Restoration





R  
S  
M



- Formulate and seed regional consensus-driven sediment management policy and guidance
- Restore and maintain coastal beaches and other critical areas of sediment deficit
- Reduce the proliferation of protective shoreline structures
- Sustain recreation and tourism
- Enhance public safety and access
- Restore coastal sandy habitats.



R  
S  
M

- ❖ An easily readable Plan is important to getting buy-in from the public, local managers and politicians
- ❖ Establish an appropriate advisory group at the onset of Plan development
- ❖ Regional Authority's Executive Officer needs a funded staff member to effectively manage sediment management activities
- ❖ Coordinate with State and Federal Regulatory programs to integrate RSM needs
- ❖ Pursue sediment stockpile areas for upland sand (SCOUP)
- ❖ Dedicated revenue streams needed





- **CSMW as a facilitator for RSM projects**
  - State currently has funds to implement RSM projects (grants from CNRA and OPC), but need local/regional partners to propose projects and a commitment to manage those projects.
- More State investments coming through Props 84, 1 and 68
- State needs a **closer working relationship with local and regional governments** (similar to BEACON, Humboldt Bay Harbor District and LA County Beaches and Harbors)
- **Sea Level Rise Adaptation Planning** – RSM is more relevant today than 20 years ago when CSMW was established
- **Demonstration Program in CA** could include:
  - Look at a couple of erosion hot spots and show how to change those areas.
    - Demonstrate soft, hard and hybrid technologies to provide increased resiliency for that area.
    - How could we take what we learn and apply to other areas?
  - ***Ports and Harbors have the sediment resources that make them key players in these activities.***

# QUESTIONS?

**CSMW Website:**

**[https://dbw.parks.ca.gov/?page\\_id=29239](https://dbw.parks.ca.gov/?page_id=29239)**

**For more info, please contact:**

**Heather Schlosser**

**US Army Corps of Engineers**

**[Heather.R.Schlosser@usace.army.mil](mailto:Heather.R.Schlosser@usace.army.mil)**

**Casey Caldwell**

**CA Dept of Parks and Recreation**

**Division of Boating and Waterways**

**[Casey.Caldwell@parks.ca.gov](mailto:Casey.Caldwell@parks.ca.gov)**

